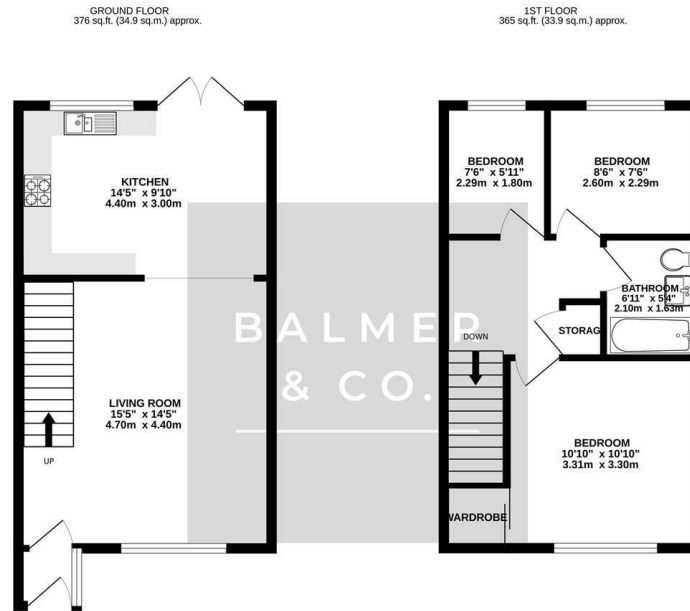


Cosworth Close, Leigh, WN7 2DU
Offers In The Region Of £170,000



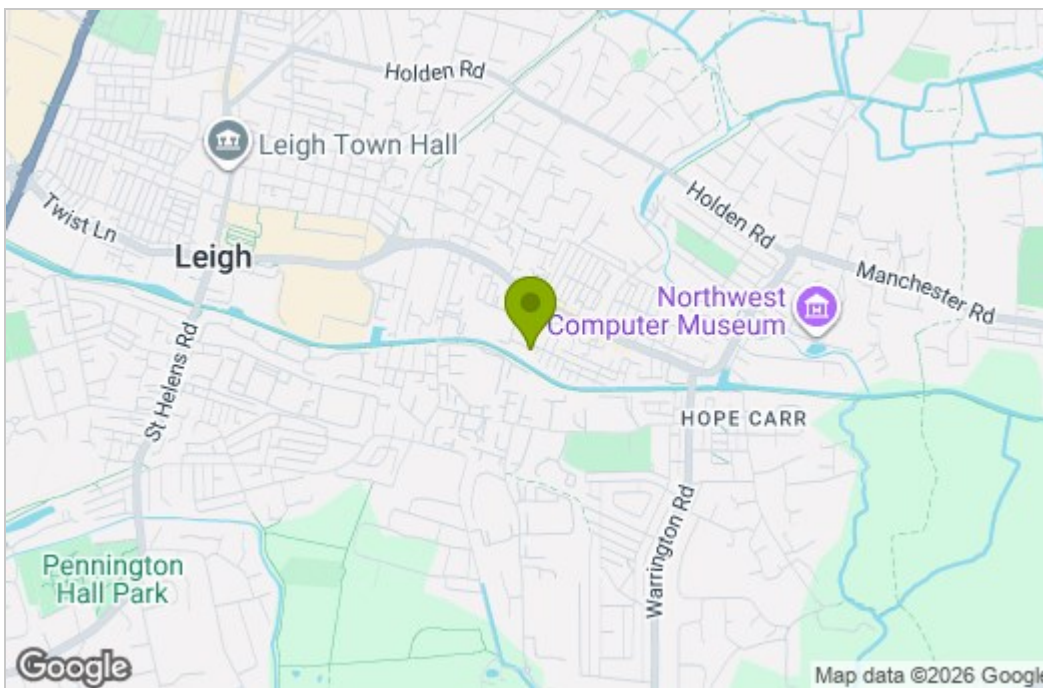
BALMER & CO in LEIGH are delighted to offer FOR SALE this fantastic three bedroom semi-detached house situated in the Bedford area of Leigh. Offered with NO ONWARD CHAIN this property comprises in brief of entrance porch, large living room, with a fitted kitchen to the rear completing the ground floor. To the first floor is a large master bedroom, second double bedroom, third single bedroom, with a three piece family bathroom completing the accommodation on offer. Externally the property is garden fronted with a long driveway providing ample off-road parking, whilst to the rear there is a fully enclosed, private, South facing garden with the Leeds-Liverpool canal beyond. The property is ideally located in a quiet cul-de-sac and is within close proximity of locals shops, schools and amenities. Early viewings highly recommended, all enquiries welcome.

Floor Plan

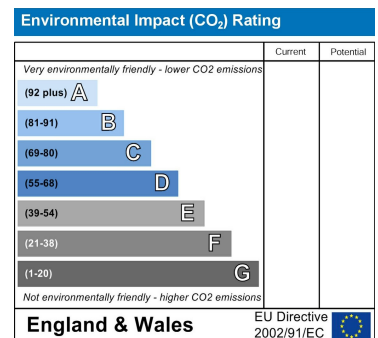
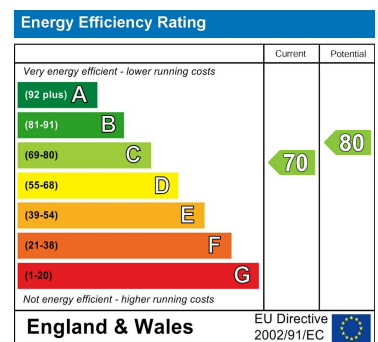


TOTAL FLOOR AREA - 740 sq.ft. (68.8 sq.m.) approx.
 Whilst every attempt has been made to ensure the accuracy of the floorplans contained herein, measurements of floor, ceiling, walls and any other items are approximate and no responsibility is taken for any errors, omissions or mis-statements. This plan is for information purposes only and should be used as a guide only. Prospective purchaser. The services, systems and appliances shown have not been tested and no guarantee is given in their operability or efficiency can be given.
 Made with Metreplex ©2025

Area Map



Energy Efficiency Graph



These particulars, whilst believed to be accurate are set out as a general outline only for guidance and do not constitute any part of an offer or contract. Intending purchasers should not rely on them as statements of representation of fact, but must satisfy themselves by inspection or otherwise as to their accuracy. No person in this firm's employment has the authority to make or give any representation or warranty in respect of the property.